

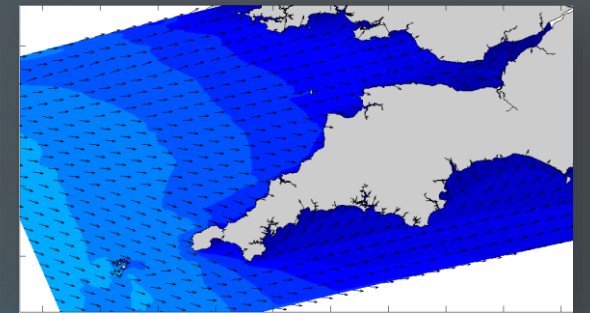
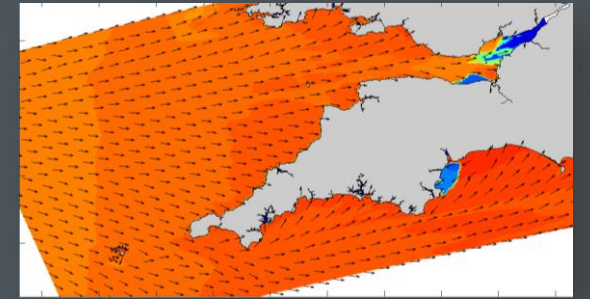
Project 22 – SWEEP-OWWL Extension

Overview – The Operational Wave and Water Level Forecast Model (OWWL) is designed to predict waves, water levels, and wave overtopping hazard, using the latest weather forecasts and wave measurements to forecast coastal floods. The OWWL model operates successfully in SW England and now in South Wales

Aim – Provide location specific wave and water level overtopping alerts free for all, regularly updated with WCMC coastal profile data

Who/Collaboration – SWEEP, CMAR and WCMC

Results – The model has been fully operational in South Wales since November 2020. Sign up [here](#) to see the forecast



coastalmonitoring.org
CMAR